

**Jazz & Brew!**

Live jazz and cold beer meet in Jenkintown this weekend ... **INSIDE!**

**Age Has No Season**

Your Guide to Active Adult Living and Lifestyles ... **INSIDE!**

# TIMES CHRONICLE

15 - 11, 2007

IV No. 27

SERVING JENKINTOWN, ABINGTON AND CHELTENHAM SINCE 1894

50¢

To subscribe, call 888-338-5433

## *Daily commute inspires landscape photography exhibit*

**By Melissa Brooks**  
Staff Writer

A few years ago Jonathan Scott Goldman of Cheltenham was fresh out of Temple University's Beasley School of Law and commuting to Doylestown to work as a law clerk. Goldman, who was a new father at the time, spent about 10 hours a week driving his grandfather's 1982 Toyota Corolla with a broken radio.

Stuck in traffic with no music, passing the same signs five days a week, the lawyer with an MFA from the School of the Museum of Fine Arts in Boston "began noticing different things" and "became fascinated with the landscape." To Goldman, "it was just one journey every day.

"As a new father it was rare then to have any alone time, time to think," he said.

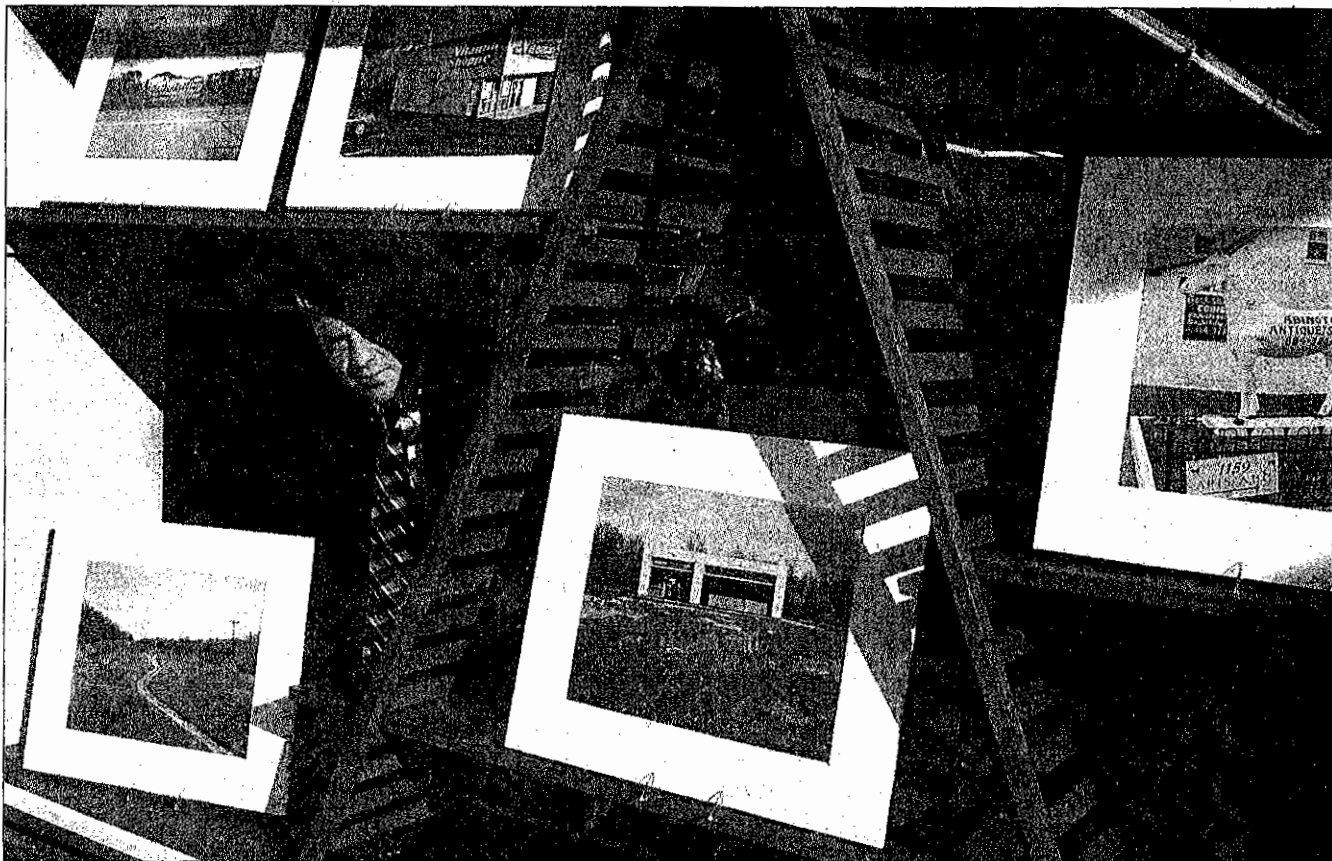


Chronicle/News staff photo - REGINA RAHILL

Jonathan Scott Goldman of Cheltenham stands inside The Frame House in Elkins Park, where his photos will be on display through the end of the month.

About four months after starting the job he began taking his camera along for the ride. A range of color landscape photographs Goldman

See **Commute**, Page 8



Chronicle/News staff photo — REGINA RAHILL

Amidst his photos, Jonathan Scott Goldman peeks out of The Frame House in Elkins Park, where his photos will be on display through Sept. 30.

## Daily commute inspires photography exhibit

### ■ Commute, from Page 1

captured along his 60-mile daily commute are now on display through Sept. 30 at The Frame House at 7900 High School Road in Elkins Park.

Goldman said he documented roadside changes as he encountered them. Chain stores and residential developments were moving in and mom and pop stores and open space were being phased out, he said.

"There were inconsistencies as a result of the changes," he said.

"These are landscapes, not pretty pictures of flowers," Goldman said of his photographs. He noted an image of an empty lot that is recognizable as an Exxon Station even without gas pumps "because we're all familiar with the architecture; it speaks to our environment."

The "sense of loss" and modern changes he observed in the "span of land from Cheltenham to Doylestown" became his first exhibition in Pennsylvania titled "Corridor: Landscapes in Transition."

An hour commute "grew to an hour-and-a-half or sometimes two-and-a-half hours," he said. Goldman spent additional time recording what he saw, changes that could soon be lost to more change.

He has since moved on from that job and currently works as a commercial litigator at a top Philadelphia law firm. Goldman said next to family, law and visual arts are his two great passions.

"I don't like to think of [photography] as a hobby because it's more — but it's not a career, either — it's part of me," he said. "I think about it every day and it's something I will not stop doing."

His love affair with photography began when he was an undergraduate student at Princeton University, where he majored in public policy and minored in visual art. After graduating — and before enrolling in art school — Goldman, who grew up outside of Baltimore, returned home and spent time photographing portraits at an inner-city public school for pregnant teens and new mothers. He also taught English in Korea and photographed children at a school for the mentally and physically handicapped. He wanted to "meet different people and learn new things" through photography, he said.

Although images of people are no longer part of his photographs, Goldman said his landscape work is "very much about people — where and how they live and the changing environment around them."

"Art is a way of communicating things I think about and care about," he said. "Issues of race, social class and otherness; memories, place and loss" have a presence in his work.

Goldman said photography "dovetails with law" in his life. "I take an issue and really study it," he said. "In the end I generate something — an oral argument in court before a judge or a photo exhibit for an audience to see."

There will be an artist's reception for "Corridor: Landscapes in Transition" on Sunday at 3:30 p.m. All photographs in the series may be purchased by contacting the Frame House at 215-635-1140. A portion of all proceeds will be donated to the Cheltenham Art Center.

*The Frame House is open Monday through Friday from 9:30 a.m. to 5:30 p.m. and Sunday from 11 a.m. to 2 p.m. For more information on the exhibit, call the gallery or e-mail [theframehouse@gmail.com](mailto:theframehouse@gmail.com). For more information on Goldman's photography, visit his Web site at [www.goldmanart.com](http://www.goldmanart.com).*

